



2 BIG DAYS

Presorted FIRST-CLASS U.S. Postage PAID Wichita, KS PERMIT # 23

RETURN SERVICE REQUESTED

TIME SENSITIVE MATERIAL PLEASE DELIVER ON TIME

SELLING TO MISSISSIPPI & ALABAMA COUNTIES, RENTAL FLEETS, CONTRACTORS, CONSTRUCTION COMPANIES & OTHERS

HUGE 2-DAY PUBLIC AUCTION

2 BIG DAYS

Auctioneers: Donnie W. Dean, MS Lic. # 733 & Wes Dean, MS Lic. 1322 PO Box 1248 • 1042 Holland Ave Philadelphia, Mississippi 39350



(4 of 5) Massey Ferguson 471 (Owned by MDOT)



(5) 2015 Mack CHU613 (83K to 99K Miles)



(2) 2014 Cat CT660S w/ Hard Ox Bodies (137K & 147K Miles)

HUGE 2-Day Contractors' Equipment & Trucks Public Auction
WEDNESDAY, SEPTEMBER 14th & THURSDAY, SEPT. 15th 2016 9AM
1042 HOLLAND AVE (HIGHWAY 19 S)
PHILADELPHIA, MISSISSIPPI 39350

Office Phone: 601.656.9768 • Office Fax: 601.656.0192 • www.deancoauction.com



Auctioneers: Donnie W. Dean, MS Lic. 733 & Wes Dean, MS Lic. 1322 • MS Gallery Lic. 835F

HUGE 2-DAY CONTRACTORS EQUIPMENT PUBLIC AUCTION
Wednesday, September 14th & Thursday, Sept. 15th, 2016 • 9 am
1042 Holland Ave (Hwy 19 S) • Philadelphia, Mississippi 39350
Phone: 601.656.9768 • Fax: 601.656.0192



2012 Bobcat T870 (1027 hrs)



Case IH Magnum 315 MFWD

bid live ONLINE



2007 Cat 140H VHP Series II



(1 of 2) 2015 John Deere 544K w/ Factory Warranty (273 & 351 hrs)



(3) 2014 Mack CHU613 (109K to 158K mi.)



2000 International 2674



2011 International 4400



1987 Peterbilt 379



2015 Mack CXU613



(2) 2013 Freightliner M2 106 (County-Owned)



2013 Mack CHU613



2008 Kenworth T800



(2) 2009 Freightliner FLD120SD Heavy Haul



2011 International 4400



1987 Peterbilt 379



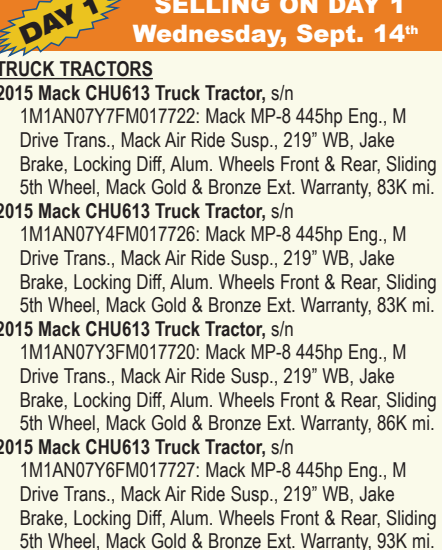
2015 Mack CXU613



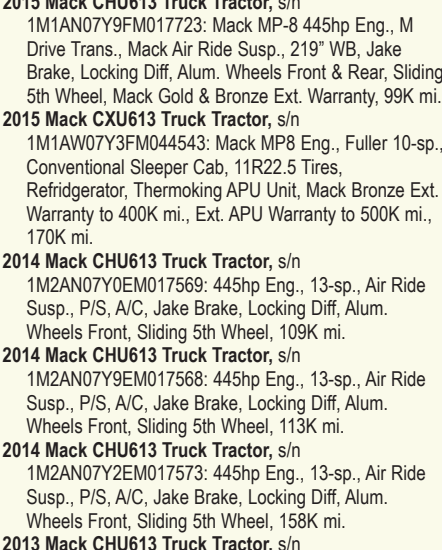
(2) 2005 International 7400 (Owned by MDOT)



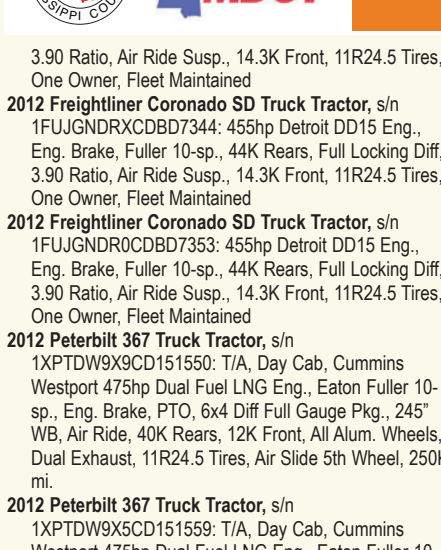
2007 Ford F650 Rollback



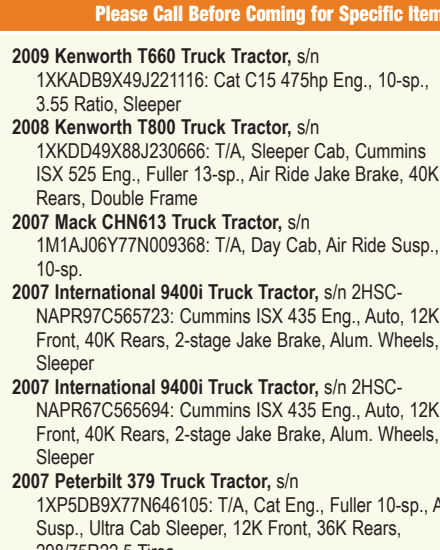
2015 Mack CHU613 Truck Tractor, s/n 1M1AN077FM017722: Mack MP-8 445hp Eng., M Drive Trans., Mack Air Ride Susp., 219" WB, Jake Brake, Locking Diff, Alum. Wheels Front & Rear, Sliding 5th Wheel, Mack Gold & Bronze Ext. Warranty, 83K mi.



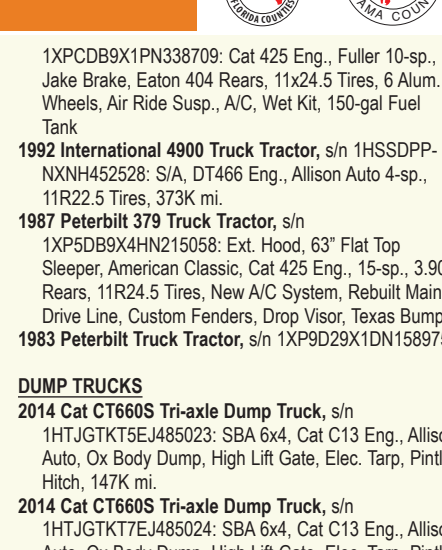
2015 Mack CXU613 Truck Tractor, s/n 1M1AN073FM044543: Mack MP8 Eng., Fuller 10-sp., Conventional Sleeper Cab, 11R22.5 Tires, Refrigerator, Thermoking APU Unit, Mack Bronze Ext. Warranty to 400K mi., Ext. APU Warranty to 500K mi., 170K mi.



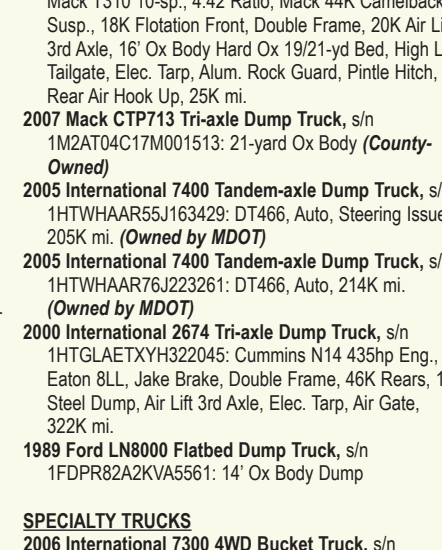
2014 Mack CHU613 Truck Tractor, s/n 1M2AN079EM017568: 445hp Eng., 13-sp., Air Ride Susp., P/S, A/C, Jake Brake, Locking Diff, Alum. Wheels Front, Sliding 5th Wheel, 109K mi.



2014 Mack CHU613 Truck Tractor, s/n 1M2AN079EM017568: 445hp Eng., 13-sp., Air Ride Susp., P/S, A/C, Jake Brake, Locking Diff, Alum. Wheels Front, Sliding 5th Wheel, 113K mi.



2014 Mack CHU613 Truck Tractor, s/n 1M2AN072EM017573: 445hp Eng., 13-sp., Air Ride Susp., Mack Air Ride Susp., 219" WB, Jake Brake, Locking Diff, Alum. Wheels Front & Rear, Sliding 5th Wheel, Mack Gold & Bronze Ext. Warranty, 93K mi.



2015 Mack CXU613 Truck Tractor, s/n 1M1AN073FM044543: Mack MP8 Eng., Fuller 10-sp., Conventional Sleeper Cab, 11R22.5 Tires, Refrigerator, Thermoking APU Unit, Mack Bronze Ext. Warranty to 400K mi., Ext. APU Warranty to 500K mi., 170K mi.

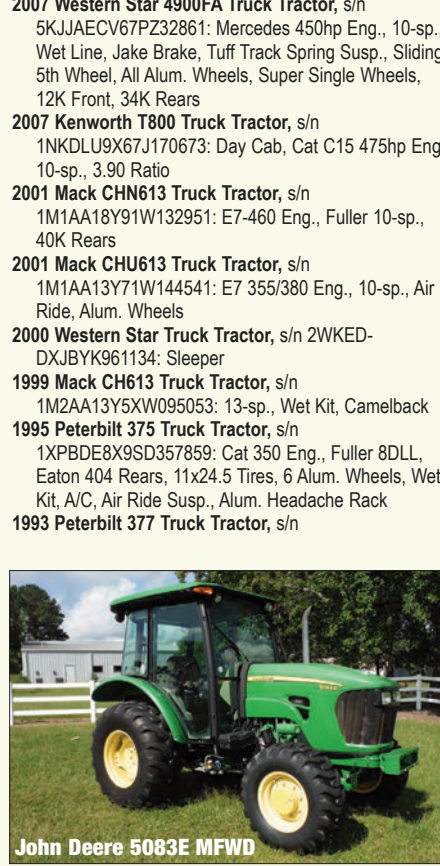
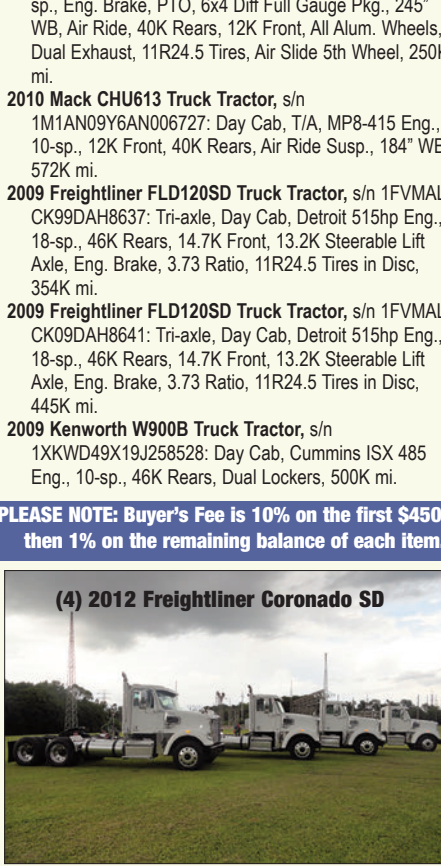


2014 Mack CHU613 Truck Tractor, s/n 1M2AN079EM017568: 445hp Eng., 13-sp., Air Ride Susp., P/S, A/C, Jake Brake, Locking Diff, Alum. Wheels Front, Sliding 5th Wheel, 109K mi.

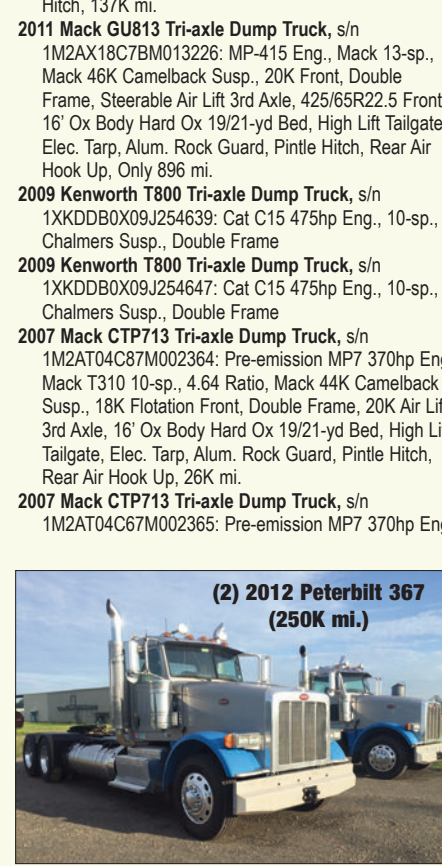
SALES INFORMATION
For Sale Information: Donnie W. Dean, Tim Harrison or Pandy Ellard at 601-656-9768 or email sold@deanco.com
Sale Site: 1042 Holland Ave, Philadelphia, MS 39350
Hotels: Pearl River Resort, 866-447-3275, Hwy 16 W, Dancing Rabbit, 601-389-6800, Hwy 16 W, Holiday Inn Express, 601-656-9484, Hwy 16 W, Deluxe Inn, 601-656-0052, Hwy 15 S, Super Inn, 601-656-3166, Hwy 16 W, Western Motel, 601-656-1223, Hwy 19 S
Auctioneers: Donnie W. Dean, MS Lic. 733; Wes Dean, MS Lic. 1322
Terms: All purchases are to be paid for in American funds on sale day by cash or cashiers check. Personal/Company check must be accompanied with a current bank letter of guarantee made to Deanco Auction guaranteeing payment to Deanco Auction. We may accept select credit cards with a 3% fee. Credit Card Deposits May Not Be Refunded.
NO EXCEPTIONS
Registration Notice: Anyone wishing to bid on items in the auction must register and obtain a bidder's card. Anyone bidding for an account other than their own must register as such.
Warranty: Everything is sold "AS IS, WHERE IS" without warranty or guarantee of any sort, with or without implied. DO NOT BID unless you have determined the condition of the lot from your own examination. All information was obtained from sources assumed to be correct but is not guaranteed by Deanco Auction.
Catalogs: This brochure and the sale-day catalog are furnished by the Auctioneer as a guide only. No guarantee as to the accuracy of description is made.
Sales Tax: All sales are subject to Mississippi sales tax unless you have proper to-sale exemption. Any dealer purchasing for resale must execute a Certificate of Resale and present your Sales Tax Permit No. Failure to furnish information will require payment of sales tax.
Absentee Bids: Mailed absentee bids will be accepted only if received at least one day prior to sale day. The bid must be accompanied with a certified check or a company/personal check (with a current bank letter of guarantee made to Deanco Auction guaranteeing payment) in the amount of the bid. Failure to adhere to this procedure will nullify the bid. No telephoned or faxed bids.



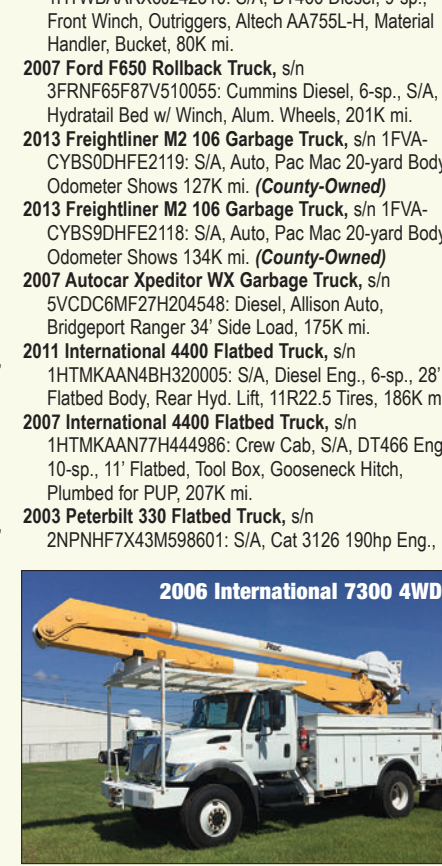
1999 Peterbilt 379 w/ Car Hauler



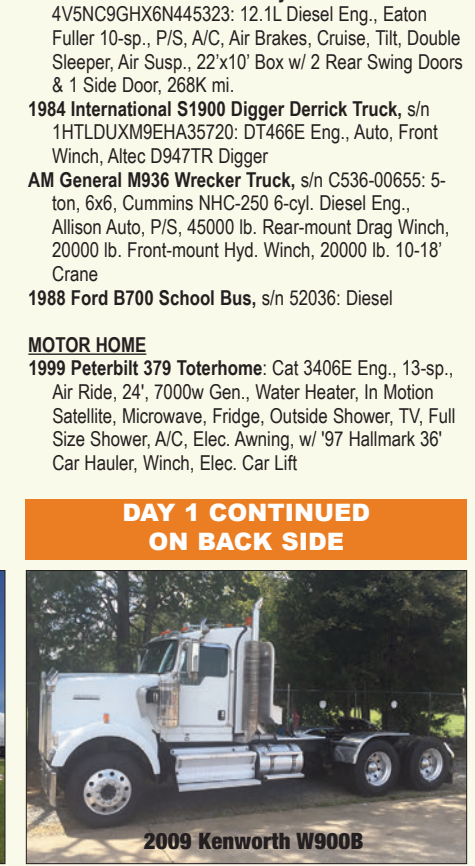
John Deere 5083E MFWD



(2) 2012 Peterbilt 367 (250K mi.)



2006 International 7300 4WD



2009 Kenworth W900B

Wednesday, September 14th & Thursday, Sept. 15th, 2016 • 9am
1042 Holland Ave (Highway 19 S) • Philadelphia, Mississippi 39350
Phone: 601.656.9768 • Fax: 601.656.0192 • www.deancoauction.com

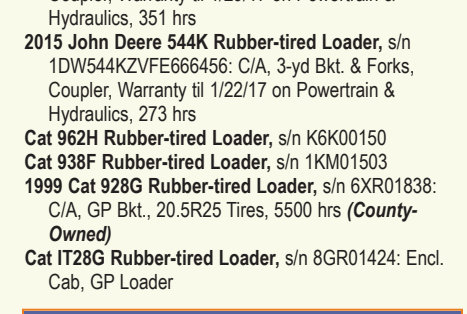
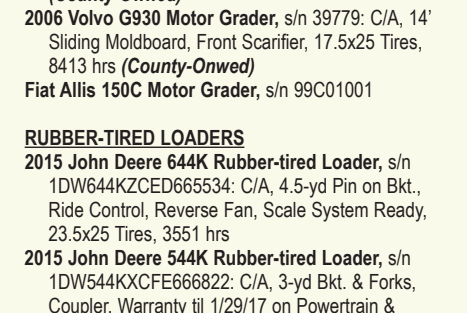
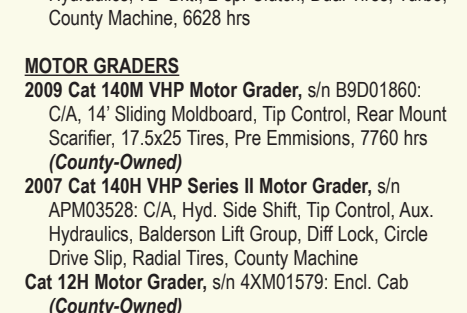
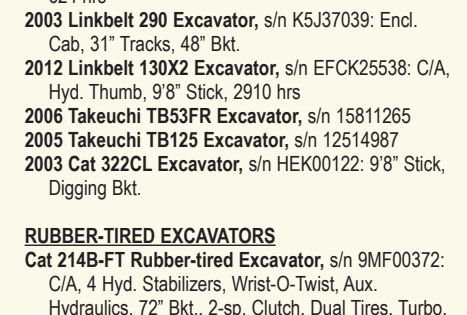
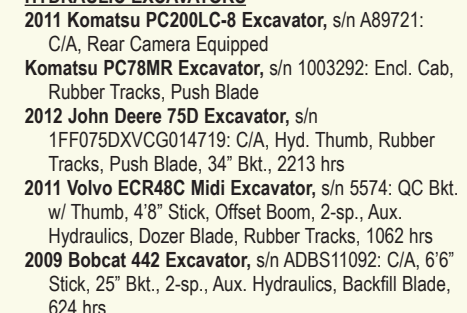
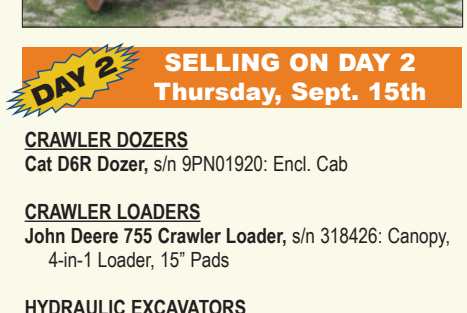
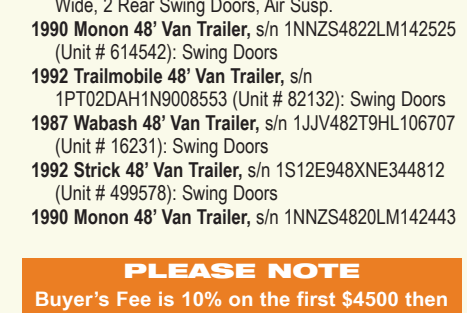
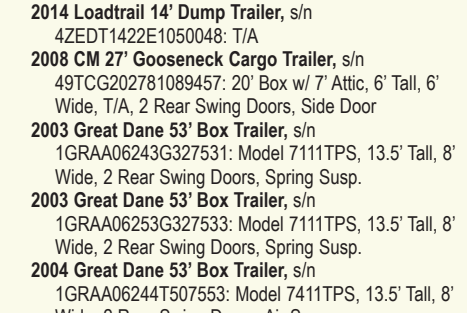
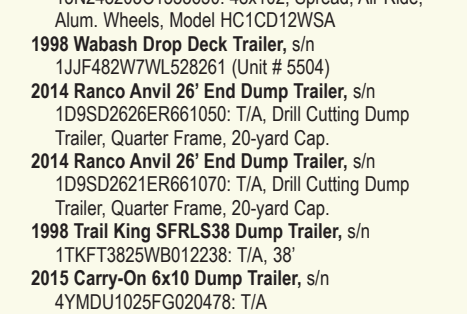
Many more items will be added prior to sale. Check our website for a daily updated list of equipment -- www.deancoauction.com Please Call Before Coming for Specific Items

3.90 Ratio, Air Ride Susp., 14.3K Front, 11R24.5 Tires, One Owner, Fleet Maintained
2012 Freightliner Coronado SD Truck Tractor, s/n 1FUJGNDRXCDBD7344: 455hp Detroit DD15 Eng., Eng. Brake, Fuller 10-sp., 44K Rears, Full Locking Diff, 3.90 Ratio, Air Ride Susp., 14.3K Front, 11R24.5 Tires, One Owner, Fleet Maintained
2012 Freightliner Coronado SD Truck Tractor, s/n 1FUJGNDRXCDBD7353: 455hp Detroit DD15 Eng., Eng. Brake, Fuller 10-sp., 44K Rears, Full Locking Diff, 3.90 Ratio, Air Ride Susp., 14.3K Front, 11R24.5 Tires, One Owner, Fleet Maintained
2012 Peterbilt 367 Truck Tractor, s/n 1XPTDW9X9CD151550: T/A, Day Cab, Cummins Westport 475hp Dual Fuel LNG Eng., Eaton Fuller 10-sp., Eng. Brake, PTO, 6x4 Diff Full Gauge Pkg., 245" WB, Air Ride, 40K Rears, 12K Front, All Alum. Wheels, Dual Exhaust, 11R24.5 Tires, Air Slide 5th Wheel, 250K mi.
2012 Peterbilt 367 Truck Tractor, s/n 1XPTDW9X9CD151559: T/A, Day Cab, Cummins Westport 475hp Dual Fuel LNG Eng., Eaton Fuller 10-sp., Eng. Brake, PTO, 6x4 Diff Full Gauge Pkg., 245" WB, Air Ride, 40K Rears, 12K Front, All Alum. Wheels, Dual Exhaust, 11R24.5 Tires, Air Slide 5th Wheel, 250K mi.
2012 Peterbilt 367 Truck Tractor, s/n 1XPTDW9X9CD151559: T/A, Day Cab, Cummins Westport 475hp Dual Fuel LNG Eng., Eaton Fuller 10-sp., Eng. Brake, PTO, 6x4 Diff Full Gauge Pkg., 245" WB, Air Ride, 40K Rears, 12K Front, All Alum. Wheels, Dual Exhaust, 11R24.5 Tires, Air Slide 5th Wheel, 250K mi.
2012 Peterbilt 367 Truck Tractor, s/n 1XPTDW9X9CD151559: T/A, Day Cab, Cummins Westport 475hp Dual Fuel LNG Eng., Eaton Fuller 10-sp., Eng. Brake, PTO, 6x4 Diff Full Gauge Pkg., 245" WB, Air Ride, 40K Rears, 12K Front, All Alum. Wheels, Dual Exhaust, 11R24.5 Tires, Air Slide 5th Wheel, 250K mi.
2012 Peterbilt 367 Truck Tractor, s/n 1XPTDW9X9CD151559: T/A, Day Cab, Cummins Westport 475hp Dual Fuel LNG Eng., Eaton Fuller 10-sp., Eng. Brake, PTO, 6x4 Diff Full Gauge Pkg., 245" WB, Air Ride, 40K Rears, 12K Front, All Alum. Wheels, Dual Exhaust, 11R24.5 Tires, Air Slide 5th Wheel, 250K mi.
2012 Peterbilt 367 Truck Tractor, s/n 1XPTDW9X9CD151559: T/A, Day Cab, Cummins Westport 475hp Dual Fuel LNG Eng., Eaton Fuller 10-sp., Eng. Brake, PTO, 6x4 Diff Full Gauge Pkg., 245" WB, Air Ride, 40K Rears, 12K Front, All Alum. Wheels, Dual Exhaust, 11R24.5 Tires, Air Slide 5th Wheel, 250K mi.
2012 Peterbilt 367 Truck Tractor, s/n 1XPTDW9X9CD151559: T/A, Day Cab, Cummins Westport 475hp Dual Fuel LNG Eng., Eaton Fuller 10-sp., Eng. Brake, PTO, 6x4 Diff Full Gauge Pkg., 245" WB, Air Ride, 40K Rears, 12K Front, All Alum. Wheels, Dual Exhaust, 11R24.5 Tires, Air Slide 5th Wheel, 250K mi.
2012 Peterbilt 367 Truck Tractor, s/n 1XPTDW9X9CD151559: T/A, Day Cab, Cummins Westport 475hp Dual Fuel LNG Eng., Eaton Fuller 10-sp., Eng. Brake, PTO, 6x4 Diff Full Gauge Pkg., 245" WB, Air Ride, 40K Rears, 12K Front, All Alum. Wheels, Dual Exhaust, 11R24.5 Tires, Air Slide 5th Wheel, 250K mi.
2012 Peterbilt 367 Truck Tractor, s/n 1XPTDW9X9CD151559: T/A, Day Cab, Cummins Westport 475hp Dual Fuel LNG Eng., Eaton Fuller 10-sp., Eng. Brake, PTO, 6x4 Diff Full Gauge Pkg., 245" WB, Air Ride, 40K Rears, 12K Front, All Alum. Wheels, Dual Exhaust, 11R24.5 Tires, Air Slide 5th Wheel, 250K mi.
2012 Peterbilt 367 Truck Tractor, s/n 1XPTDW9X9CD151559: T/A, Day Cab, Cummins Westport 475hp Dual Fuel LNG Eng., Eaton Fuller 10-sp., Eng. Brake, PTO, 6x4 Diff Full Gauge Pkg., 245" WB, Air Ride, 40K Rears, 12K Front, All Alum. Wheels, Dual Exhaust, 11R24.5 Tires, Air Slide 5th Wheel, 250K mi.
2012 Peterbilt 367 Truck Tractor, s/n 1XPTDW9X9CD151559: T/A, Day Cab, Cummins Westport 475hp Dual Fuel LNG Eng., Eaton Fuller 10-sp., Eng. Brake, PTO, 6x4 Diff Full Gauge Pkg., 245" WB, Air Ride, 40K Rears, 12K Front, All Alum. Wheels, Dual Exhaust, 11R24.5 Tires, Air Slide 5th Wheel, 250K mi.
2012 Peterbilt 367 Truck Tractor, s/n 1XPTDW9X9CD151559: T/A, Day Cab, Cummins Westport 475hp Dual Fuel LNG Eng., Eaton Fuller 10-sp., Eng. Brake, PTO, 6x4 Diff Full Gauge Pkg., 245" WB, Air Ride, 40K Rears, 12K Front, All Alum. Wheels, Dual Exhaust, 11R24.5 Tires, Air Slide 5th Wheel, 250K mi.
2012 Peterbilt 367 Truck Tractor, s/n 1XPTDW9X9CD151559: T/A, Day Cab, Cummins Westport 475hp Dual Fuel LNG Eng., Eaton Fuller 10-sp., Eng. Brake, PTO, 6x4 Diff Full Gauge Pkg., 245" WB, Air Ride, 40K Rears, 12K Front, All Alum. Wheels, Dual Exhaust, 11R24.5 Tires, Air Slide 5th Wheel, 250K mi.
2012 Peterbilt 367 Truck Tractor, s/n 1XPTDW9X9CD151559: T/A, Day Cab, Cummins Westport 475hp Dual Fuel LNG Eng., Eaton Fuller 10-sp., Eng. Brake, PTO, 6x4 Diff Full Gauge Pkg., 245" WB, Air Ride, 40K Rears, 12K Front, All Alum. Wheels, Dual Exhaust, 11R24.5 Tires, Air Slide 5th Wheel, 250K mi.
2012 Peterbilt 367 Truck Tractor, s/n 1XPTDW9X9CD151559: T/A, Day Cab, Cummins Westport 475hp Dual Fuel LNG Eng., Eaton Fuller 10-sp., Eng. Brake, PTO, 6x4 Diff Full Gauge Pkg., 245" WB, Air Ride, 40K Rears, 12K Front, All Alum. Wheels, Dual Exhaust, 11R24.5 Tires, Air Slide 5th Wheel, 250K mi.
2012 Peterbilt 367 Truck Tractor, s/n 1XPTDW9X9CD151559: T/A, Day Cab, Cummins Westport 475hp Dual Fuel LNG Eng., Eaton Fuller 10-sp., Eng. Brake, PTO, 6x4 Diff Full Gauge Pkg., 245" WB, Air Ride, 40K Rears, 12K Front, All Alum. Wheels, Dual Exhaust, 11R24.5 Tires, Air Slide 5th Wheel, 250K mi.
2012 Peterbilt 367 Truck Tractor, s/n 1XPTDW9X9CD151559: T/A, Day Cab, Cummins Westport 475hp Dual Fuel LNG Eng., Eaton Fuller 10-sp., Eng. Brake, PTO, 6x4 Diff Full Gauge Pkg., 245" WB, Air Ride, 40K Rears, 12K Front, All Alum. Wheels, Dual Exhaust, 11R24.5 Tires, Air Slide 5th Wheel, 250K mi.
2012 Peterbilt 367 Truck Tractor, s/n 1XPTDW9X9CD151559: T/A, Day Cab, Cummins Westport 475hp Dual Fuel LNG Eng., Eaton Fuller 10-sp., Eng. Brake, PTO, 6x4 Diff Full Gauge Pkg., 245" WB, Air Ride, 40K Rears, 12K Front, All Alum. Wheels, Dual Exhaust, 11R24.5 Tires, Air Slide 5th Wheel, 250K mi.
2012 Peterbilt 367 Truck Tractor, s/n 1XPTDW9X9CD151559: T/A, Day Cab, Cummins Westport 475hp Dual Fuel LNG Eng., Eaton Fuller 10-sp., Eng. Brake, PTO, 6x4 Diff Full Gauge Pkg., 245" WB, Air Ride, 40K Rears, 12K Front, All Alum. Wheels, Dual Exhaust, 11R24.5 Tires, Air Slide 5th Wheel, 250K mi.
2012 Peterbilt 367 Truck Tractor, s/n 1XPTDW9X9CD151559: T/A, Day Cab, Cummins Westport 475hp Dual Fuel LNG Eng., Eaton Fuller 10-sp., Eng. Brake, PTO, 6x4 Diff Full Gauge Pkg., 245" WB, Air Ride, 40K Rears, 12K Front, All Alum. Wheels, Dual Exhaust, 11R24.5 Tires, Air Slide 5th Wheel, 250K mi.
2012 Peterbilt 367 Truck Tractor, s/n 1XPTDW9X9CD151559: T/A, Day Cab, Cummins Westport 475hp Dual Fuel LNG Eng., Eaton Fuller 10-sp., Eng. Brake, PTO, 6x4 Diff Full Gauge Pkg., 245" WB, Air Ride, 40K Rears, 12K Front, All Alum. Wheels, Dual Exhaust, 11R24.5 Tires, Air Slide 5th Wheel, 250K mi.
2012 Peterbilt 367 Truck Tractor, s/n 1XPTDW9X9CD151559: T/A, Day Cab, Cummins Westport 475hp Dual Fuel LNG Eng., Eaton Fuller 10-sp., Eng. Brake, PTO, 6x4 Diff Full Gauge Pkg., 245" WB, Air Ride, 40K Rears, 12K Front, All Alum. Wheels, Dual Exhaust, 11R24.5 Tires, Air Slide 5th Wheel, 250K mi.
2012 Peterbilt 367 Truck Tractor, s/n 1XPTDW9X9CD151559: T/A, Day Cab, Cummins Westport 475hp Dual Fuel LNG Eng., Eaton Fuller 10-sp., Eng. Brake, PTO, 6x4 Diff Full Gauge Pkg., 245" WB, Air Ride, 40K Rears, 12K Front, All Alum. Wheels, Dual Exhaust, 11R24.5 Tires, Air Slide 5th Wheel, 250K mi.
2012 Peterbilt 367 Truck Tractor, s/n 1XPTDW9X9CD151559: T/A, Day Cab, Cummins Westport 475hp Dual Fuel LNG Eng., Eaton Fuller 10-sp., Eng. Brake, PTO, 6x4 Diff Full Gauge Pkg., 245" WB, Air Ride, 40K Rears, 12K Front, All Alum. Wheels, Dual Exhaust, 11R24.5 Tires, Air Slide 5th Wheel, 250K mi.
2012 Peterbilt 367 Truck Tractor, s/n 1XPTDW9X9CD151559: T/A, Day Cab, Cummins Westport 475hp Dual Fuel LNG Eng., Eaton Fuller 10-sp., Eng. Brake, PTO, 6x4 Diff Full Gauge Pkg., 245" WB, Air Ride, 40K Rears, 12K Front, All Alum. Wheels, Dual Exhaust, 11R24.5 Tires, Air Slide 5th Wheel, 250K mi.
2012 Peterbilt 367 Truck Tractor, s/n 1XPTDW9X9CD151559: T/A, Day Cab, Cummins Westport 475hp Dual Fuel LNG Eng., Eaton Fuller 10-sp., Eng. Brake, PTO, 6x4 Diff Full Gauge Pkg., 245" WB, Air Ride, 40K Rears, 12K Front, All Alum. Wheels, Dual Exhaust, 11R24.5 Tires, Air Slide 5th Wheel, 250K mi.
2012 Peterbilt 367 Truck Tractor, s/n 1XPTDW9X9CD151559: T/A, Day Cab, Cummins Westport 475hp Dual Fuel LNG Eng., Eaton Fuller 10-sp., Eng. Brake, PTO, 6x4 Diff Full Gauge Pkg., 245" WB, Air Ride, 40K Rears, 12K Front, All Alum. Wheels, Dual Exhaust, 11R24.5 Tires, Air Slide 5th Wheel, 250K mi.
2012 Peterbilt 367 Truck Tractor, s/n 1XPTDW9X9CD151559: T/A, Day Cab, Cummins Westport 475hp Dual Fuel LNG Eng., Eaton Fuller 10-sp., Eng. Brake, PTO, 6x4 Diff Full Gauge Pkg., 245" WB, Air Ride, 40K Rears, 12K Front, All Alum. Wheels, Dual Exhaust, 11R24.5 Tires, Air Slide 5th Wheel, 250K mi.
2012 Peterbilt 367 Truck Tractor, s/n 1XPTDW9X9CD151559: T/A, Day Cab, Cummins Westport 475hp Dual Fuel LNG Eng., Eaton Fuller 10-sp., Eng. Brake, PTO, 6x4 Diff Full Gauge Pkg., 245" WB, Air Ride, 40K Rears, 12K Front, All Alum. Wheels, Dual Exhaust, 11R24.5 Tires, Air Slide 5th Wheel, 250K mi.
2012 Peterbilt 367 Truck Tractor, s/n 1XPTDW9X9CD151559: T/A, Day Cab, Cummins Westport 475hp Dual Fuel LNG Eng., Eaton Fuller 10-sp., Eng. Brake, PTO, 6x4 Diff Full Gauge Pkg., 245" WB, Air Ride, 40K Rears, 12K Front, All Alum. Wheels, Dual Exhaust, 11R24.5 Tires, Air Slide 5th Wheel, 250K mi.
2012 Peterbilt 367 Truck Tractor, s/n 1XPTDW9X9CD151559: T/A, Day Cab, Cummins Westport 475hp Dual Fuel LNG Eng., Eaton Fuller 10-sp., Eng. Brake, PTO, 6x4 Diff Full Gauge Pkg., 245" WB, Air Ride, 40K Rears, 12K Front, All Alum. Wheels, Dual Exhaust, 11R24.5 Tires, Air Slide 5th Wheel, 250K mi.
2012 Peterbilt 367 Truck Tractor, s/n 1XPTDW9X9CD151559: T/A, Day Cab, Cummins Westport 475hp Dual Fuel LNG Eng., Eaton Fuller 10-sp., Eng. Brake, PTO, 6x4 Diff Full Gauge Pkg., 245" WB, Air Ride, 40K Rears, 12K Front, All Alum. Wheels, Dual Exhaust, 11R24.5 Tires, Air Slide 5th Wheel, 250K mi.
2012 Peterbilt 367 Truck Tractor, s/n 1XPTDW9X9CD151559: T/A, Day Cab, Cummins Westport 475hp Dual Fuel LNG Eng., Eaton Fuller 10-sp., Eng. Brake, PTO, 6x4 Diff Full Gauge Pkg., 245" WB, Air Ride, 40K Rears, 12K Front, All Alum. Wheels, Dual Exhaust, 11R24.5 Tires, Air Slide 5th Wheel, 250K mi.
2012 Peterbilt 367 Truck Tractor, s/n 1XPTDW9X9CD151559: T/A, Day Cab, Cummins Westport 475hp Dual Fuel LNG Eng., Eaton Fuller 10-sp., Eng. Brake, PTO, 6x4 Diff Full Gauge Pkg., 245" WB, Air Ride, 40K Rears, 12K Front, All Alum. Wheels, Dual Exhaust, 11R24.5 Tires, Air Slide 5th Wheel, 250K mi.
2012 Peterbilt 367 Truck Tractor, s/n 1XPTDW9X9CD151559: T/A, Day Cab, Cummins Westport 475hp Dual Fuel LNG Eng., Eaton Fuller 10-sp., Eng. Brake, PTO, 6x4 Diff Full Gauge Pkg., 245" WB, Air Ride, 40K Rears, 12K Front, All Alum. Wheels, Dual Exhaust, 11R24.5 Tires, Air Slide 5th Wheel, 250K mi.
2012 Peterbilt 367 Truck Tractor, s/n 1XPTDW9X9CD151559: T/A, Day Cab, Cummins Westport 475hp Dual Fuel LNG Eng., Eaton Fuller 10-sp., Eng. Brake, PTO, 6x4 Diff Full Gauge Pkg., 245" WB, Air Ride, 40K Rears, 12K Front, All Alum. Wheels, Dual Exhaust, 11R24.5 Tires, Air Slide 5th Wheel, 250K mi.
2012 Peterbilt 367 Truck Tractor, s/n 1XPTDW9X9CD151559: T/A, Day Cab, Cummins Westport 475hp Dual Fuel LNG Eng., Eaton Fuller 10-sp., Eng. Brake, PTO, 6x4 Diff Full Gauge Pkg., 245" WB, Air Ride, 40K Rears, 12K Front, All Alum. Wheels, Dual Exhaust, 11R24.5 Tires, Air Slide 5th Wheel, 250K mi.
2012 Peterbilt 367 Truck Tractor, s/n 1XPTDW9X9CD151559: T/A, Day Cab, Cummins Westport 475hp Dual Fuel LNG Eng., Eaton Fuller 10-sp., Eng. Brake, PTO, 6x4 Diff Full Gauge Pkg., 245" WB, Air Ride, 40K Rears, 12K Front, All Alum. Wheels, Dual Exhaust, 11R24.5 Tires, Air Slide 5th Wheel, 250K mi.
2012 Peterbilt 367 Truck Tractor, s/n 1XPTDW9X9CD151559: T/A, Day Cab, Cummins Westport 475hp Dual Fuel LNG Eng., Eaton Fuller 10-sp., Eng. Brake, PTO, 6x4 Diff Full Gauge Pkg., 245" WB, Air Ride, 40K Rears, 12K Front, All Alum. Wheels, Dual Exhaust, 11R24.5 Tires, Air Slide 5th Wheel, 250K mi.
2012 Peterbilt 367 Truck Tractor, s/n 1XPTDW9X9CD151559: T/A, Day Cab, Cummins Westport 475hp Dual Fuel LNG Eng., Eaton Fuller 10-sp., Eng. Brake, PTO, 6x4 Diff Full Gauge Pkg., 245" WB, Air Ride, 40K Rears, 12K Front, All Alum. Wheels, Dual Exhaust, 11R24.5 Tires, Air Slide 5th Wheel, 250K mi.
2012 Peterbilt 367 Truck Tractor, s/n 1XPTDW9X9CD151559: T/A, Day Cab, Cummins Westport 475hp Dual Fuel LNG Eng., Eaton Fuller 10-sp., Eng. Brake, PTO, 6x4 Diff Full Gauge Pkg., 245" WB, Air Ride, 40K Rears, 12K Front, All Alum. Wheels, Dual Exhaust, 11R24.5 Tires, Air Slide 5th Wheel, 250K mi.
2012 Peterbilt 367 Truck Tractor, s/n 1XPTDW9X9CD151559: T/A, Day Cab, Cummins Westport 475hp Dual Fuel LNG Eng., Eaton Fuller 10-sp., Eng. Brake, PTO, 6x4 Diff Full Gauge Pkg., 245" WB, Air Ride, 40K Rears, 12K Front, All Alum. Wheels, Dual Exhaust, 11R24.5 Tires, Air Slide 5th Wheel, 250K mi.
2012 Peterbilt 367 Truck Tractor, s/n 1XPTDW9X9CD151559: T/A, Day Cab, Cummins Westport 475hp Dual Fuel LNG Eng., Eaton Fuller 10-sp., Eng. Brake, PTO, 6x4 Diff Full Gauge Pkg., 245" WB, Air Ride, 40K Rears, 12K Front, All Alum. Wheels, Dual Exhaust, 11R24.5 Tires, Air Slide 5th Wheel, 250K mi.
2012 Peterbilt 367 Truck Tractor, s/n 1XPTDW9X9CD151559: T/A, Day Cab, Cummins Westport 475hp Dual Fuel LNG Eng., Eaton Fuller 10-sp., Eng. Brake, PTO, 6x4 Diff Full Gauge Pkg., 245" WB, Air Ride, 40K Rears, 12K Front, All Alum. Wheels, Dual Exhaust, 11R24.5 Tires, Air Slide 5th Wheel, 250K mi.
2012 Peterbilt 367 Truck Tractor, s/n 1XPTDW9X9CD151559: T/A, Day Cab, Cummins Westport 475hp Dual Fuel LNG Eng., Eaton Fuller 10-sp., Eng. Brake, PTO, 6x4 Diff Full Gauge Pkg., 245" WB, Air Ride, 40K Rears, 12K Front, All Alum. Wheels, Dual Exhaust, 11R24.5 Tires, Air Slide 5th Wheel, 250K mi.
2012 Peterbilt 367 Truck Tractor, s/n 1XPTDW9X9CD151559: T/A, Day Cab, Cummins Westport 475hp Dual Fuel LNG Eng., Eaton Fuller 10-sp., Eng. Brake, PTO, 6x4 Diff Full Gauge Pkg., 245" WB, Air Ride, 40K Rears, 12K Front, All Alum. Wheels, Dual Exhaust, 11R24.5 Tires, Air Slide 5th Wheel, 250K mi.
2012 Peterbilt 367 Truck Tractor, s/n 1XPTDW9X9CD151559: T/A, Day Cab, Cummins Westport 475hp Dual Fuel LNG Eng., Eaton Fuller 10-sp., Eng. Brake, PTO, 6x4 Diff Full Gauge Pkg., 245" WB, Air Ride, 40K Rears, 12K Front, All Alum. Wheels, Dual Exhaust, 11R24.5 Tires, Air Slide 5th Wheel, 250K mi.
2012 Peterbilt 367 Truck Tractor, s/n 1XPTDW9X9CD151559: T/A, Day Cab, Cummins Westport 475hp Dual Fuel LNG Eng., Eaton Fuller 10-sp., Eng. Brake, PTO, 6x4 Diff Full Gauge Pkg., 245" WB, Air Ride, 40K Rears, 12K Front, All Alum. Wheels, Dual Exhaust, 11R24.5 Tires, Air Slide 5th Wheel, 250K mi.
2012 Peterbilt 367 Truck Tractor, s/n 1XPTDW9X9CD151559: T/A, Day Cab, Cummins Westport 475hp Dual Fuel LNG Eng., Eaton Fuller 10-sp., Eng. Brake, PTO, 6x4 Diff Full Gauge Pkg., 245" WB, Air Ride, 40K Rears, 12K Front, All Alum. Wheels, Dual Exhaust, 11R24.5 Tires, Air Slide 5th Wheel, 250K mi.
2012 Peterbilt 367 Truck Tractor, s/n 1XPTDW9X9CD151559: T/A, Day Cab, Cummins Westport 475hp Dual Fuel LNG



DAY 1 CONTINUED

TRAILERS
 2003 Talbert Detach Lowboy, s/n 40F50513831022046: 25'x102" Deck, 255/70R22.5 Tires, Disc Wheels
 1998 Etnyre Black Hawk Detach Lowboy, s/n 1E9624300WE111022: Wet Line, Non Ground Bearing, 22.5 Tires
 20' Lowboy, s/n 415FLZ: 5' Dovetail
 2012 Fontaine Infinity Step Deck Trailer, s/n 13N248203C1553650: 48x102, Spread, Air Ride, Alum. Wheels, Model HC1CD12WSA
 1998 Washburn Drop Deck Trailer, s/n 1JF482W7WL528261 (Unit # 5504)
 2014 Ranco Anvil 26' End Dump Trailer, s/n 1D9SD262ER61050: T/A, Drill Cutting Dump Trailer, Quarter Frame, 20-yard Cap.
 2014 Ranco Anvil 26' End Dump Trailer, s/n 1D9SD2621ER61070: T/A, Drill Cutting Dump Trailer, Quarter Frame, 20-yard Cap.
 1998 Trail King SFRLS38 Dump Trailer, s/n 1TKFT3825WB012238: T/A, 38'
 2015 Carry-On 6x10 Dump Trailer, s/n 4YMDU1025FG020478: T/A
 2014 Loadrail 14' Dump Trailer, s/n 4ZEDT1422E1050048: T/A
 2008 CM 27' Gooseneck Cargo Trailer, s/n 49TCG202781089457: 20' Box w/ 7' Attic, 6' Tall, 6' Wide, T/A, 2 Rear Swing Doors, Side Door
 2003 Great Dane 53' Box Trailer, s/n 1GRAA06243G327531: Model 7111TPS, 13.5' Tall, 8' Wide, 2 Rear Swing Doors, Spring Susp.
 2003 Great Dane 53' Box Trailer, s/n 1GRAA06253G327533: Model 7111TPS, 13.5' Tall, 8' Wide, 2 Rear Swing Doors, Spring Susp.
 2004 Great Dane 53' Box Trailer, s/n 1GRAA06244T507553: Model 7411TPS, 13.5' Tall, 8' Wide, 2 Rear Swing Doors, Air Susp.
 1990 Monon 48' Van Trailer, s/n 1N1ZS4822LM142525 (Unit # 614542): Swing Doors
 1992 Trailmobile 48' Van Trailer, s/n 1PT02DAH1N9008553 (Unit # 82132): Swing Doors
 1987 Washburn 48' Van Trailer, s/n 1JUV48279HL106707 (Unit # 16231): Swing Doors
 1992 Strick 48' Van Trailer, s/n 1S12E948XNE344812 (Unit # 499578): Swing Doors
 1990 Monon 48' Van Trailer, s/n 1N1ZS4820LM142443



(Unit # 920609): Swing Doors
 1989 Dorsey 48' Van Trailer, s/n 1DTV11226KA189352 (Unit # 135348): Swing Doors
 1996 Monon 48' Van Trailer, s/n 1N1ZS4824M266893 (Unit # 223274): Swing Doors
 2000 Trailmobile 53' Van Trailer, s/n 1PT01JAH6Y6006613 (Unit # U35762): Roll Up Door
 1999 Trailmobile 53' Van Trailer, s/n 1PT01JAHXW6006497 (Unit # U26119): Roll Up Door
 1998 Trailmobile 53' Van Trailer, s/n 1PT01JAHXW6010807 (Unit # U23845): Roll Up Door
 2016 Tiger Hay Trailer, s/n 5UTBU2024GMM02251: 4-Bale, Has MSO

AG TRACTORS
 Case IH Magnum 315 MFWD Tractor, s/n ZBRD02268: C/A, 480/80R50 Factory Rear Duals, 380/80R38 Factory Front Duals, Front Wts., 2800 hrs
 Case IH Magnum 260 MFWD Tractor, s/n ZCRD03092: C/A, Heat, Front Weight
 John Deere 6405 Tractor, s/n L064053434074: 2wd, 480 hrs (Owned by MDOT)
 John Deere 5083E MFWD Tractor, s/n 1LV5083ETCY442770: C/A, JD 553 Loader w/ Bkt., 3 Hyd. Remotes, Draw Bar, 3PH, PTO, 2681 hrs
 John Deere 5083E MFWD Tractor, s/n 1LV5083ECCY540784: C/A, 2 Hyd. Remotes, 3PH, PTO, 2930 hrs
 John Deere 4200 Tractor, s/n LV4200C224920: 2wd, Roll Bar, 3606 hrs
 John Deere 2955 MFWD Tractor, s/n 763942: Rollbar
 John Deere 2150 Tractor, s/n G491391
 John Deere 75 MFWD Tractor, s/n LV07550175013: Diesel, Hydrostatic, Rollbar, 60" Belly Mower, 680 hrs
 Kubota M9080TC MFWD Tractor, s/n 50203: C/A
 Kubota M3000 MFWD Tractor, s/n 61788: C/A, Front Loader
 Kubota M6800 MFWD Tractor, s/n 66671: Front Loader
 Kubota M5700 MFWD Tractor, s/n 56853: Kubota
 Kubota M5040 MFWD Tractor, s/n 51516: Roll Bar
 Kubota L5030 HSTC MFWD Tractor, s/n 37820: C/A, w/ Kubota LA853 Loader
 Kubota L4400DT MFWD Tractor, s/n 84070: Roll Bar Canopy, Diesel, Hydrostatic, Front Wts., 3PH, PTO, 658 hrs
 Kubota L3010 MFWD Tractor, s/n 75723: 2-post Canopy, Turf Tires, 2495 hrs
 Kubota L2900 GST MFWD Tractor, s/n 58283: Rollbar Canopy, LA480 Front Loader, Turf Tires, Draw Bar, PTO, 1067 hrs
 New Holland TS110 MFWD Tractor, s/n 164168B: No Reverse, 1633 hrs (Owned by MDOT)

SPRAYERS
 John Deere 4730 Self-propelled Sprayer: C/A, Heat, 7-Section Spray Boom, Full Time 4WD

1-TON TRUCKS & PICKUPS
 2011 Ford F150XL Pickup, s/n 1FTRF12W89K23012: 2wd, Auto, LWB, 170K mi.
 2010 Ford F350XL Truck, s/n 1FTWV3CYXAA59721: 4-door, 6.8L V10 Gas Eng., Auto, No Bed, 143K mi.
 2008 Ford F550 Truck, s/n 1FDAW56R98EA23924: 4-door, Powerstroke V8 Diesel, 152K mi.
 2008 Ford F150XL Pickup, s/n 1FTRF12W89K27421: 2wd, Ext. Cab, Auto, 136K mi.
 2007 Chevy 1500 Pickup, s/n 1GCEC192672179414: 5.3L Eng., Auto, Odometer Shows 145K mi.
 2005 Ford F450 Truck: Powerstroke Diesel, Encl. Utility Body

RELATED ATTACHMENTS
 New Holland TS110 MFWD Tractor, s/n 167578B: 2717 hrs (Owned by MDOT)
 New Holland TS110A Tractor, s/n NOT FOUND: 2wd, Canopy, Sweeps, 888 hrs (Owned by MDOT)
 New Holland TC29D MFWD Tractor, s/n G040979: Rollbar, Front Loader w/ Bkt., Turf Tires, 439 hrs
 New Holland TC24 MFWD Tractor, s/n HG17137: w/ Front Loader, Roll Bar Canopy, Hydrostatic, 331 hrs
 Ford Alamo Groundskeeper Tractor Finishing Mower, s/n 01009: 15' Finishing Mower, Diesel, 1386 hrs
 Massey Ferguson 471 Tractor, s/n 9363BL27054: 2wd, Diesel Eng., 800 hrs (Owned by MDOT)
 Massey Ferguson 471 Tractor, s/n 9363BL28071: 2wd, Diesel Eng., 1255 hrs (Owned by MDOT)
 Massey Ferguson 471 Tractor, s/n 9363BL26006: 2wd, Diesel Eng., 1087 hrs (Owned by MDOT)
 Massey Ferguson 471 Tractor, s/n 9363BL27057: 2wd, Diesel Eng., 406 hrs (Owned by MDOT)
 Challenger MT525B MFWD Tractor, s/n N119016: Encl. Cab, 3 Hyd. Remotes, Draw Bar, PTO, 3PH, Front Wts., Meter Shows 1780 hrs (County-Owned)
 Challenger MT465B MFWD Tractor, s/n U013074: C/A, 460/85R34 Rears, 380/85R24 Fronts, 2 Hyd Remotes, 3PH, PTO, Draw Bar, Diamond Side & Rear Flail Mowers, Meter Shows 1234 hrs (County-Owned)
 International 1066 Tractor, s/n 2610175U053814
 International 1806D Tractor, s/n 5293S-Y

LOADER BACKHOES
 2006 Cat 420E 4WD Extendahoe, s/n HLS07273: Canopy MP Bkt., 5446 hrs
 2005 Cat 420D 4WD Loader Backhoe, s/n FDP23871: 4-post Canopy, GP Loader, 24' Bkt.
 2009 John Deere 310J Loader Backhoe, s/n 1T0310JXCA0183716: Canopy, 1-year JD Warranty on Rebuilt Trans. In August 2016
 2007 John Deere 310J 4WD Loader Backhoe, s/n T0310JX150894: 4-post Canopy, Front Loader, GP Bkt., 1726 hrs
 Kubota WB140 Loader Backhoe, s/n 11311
 Ford 655C Extendahoe, s/n A410091: 2wd, 36" Bkt. (Owned by MDOT)

MINI EXCAVATORS
 2014 John Deere 17D Mini Excavator, s/n K222539
 2011 Cat 305DCR Mini Excavator, s/n XERO1253: Encl. Cab, Hyd. Thumb, 2394 hrs
 Kubota PC35MR-2 Mini Excavator, s/n 6202
 2002 Bobcat 331 Mini Excavator, s/n 232513590

SKID STEER LOADERS
 2012 Bobcat T750 Skid Steer, s/n ATF612223: High Flow, 2-sp., C/A, Joystick Controls, GP Bkt., 1539 hrs
 2010 Bobcat T300 Skid Steer, s/n A5G035506
 2012 Cat 287C Skid Steer, s/n MAS02157
 Cat 287 Skid Steer
 2002 Cat 236 Skid Steer, s/n 4Y204906: Canopy, Aux. Hydraulics
 2012 Kubota SVL90 Skid Steer, s/n 11351
 2011 Kubota SVL 90 Skid Steer
 2005 John Deere 325 Skid Steer, s/n B110853
 2000 John Deere 240 Skid Steer, s/n 242338: Canopy, GP Bkt., Aux. Hydraulics
 2005 Takeuchi TL140 Skid Steer, s/n 21402782: Encl. Cab w/ AC & Heat, High Flow, 78" Bkt., 2243 hrs
 Ditchwitch SK350 Walk-behind Skid Steer, s/n 0000914: Gas Eng., Bkt., 135 hrs
 Toro Dingo 222 Mini Loader, s/n 890870: Bucket & Forks, 1470 hrs

FORESTRY MULCHERS
 2012 Bobcat T870 Forestry Mulcher, s/n A3PG11768: Rubber Tracks, w/ Bobcat FRC60 Mulching Head, 1027 hrs
 2009 ASV Positrac PT100 Skid Steer/Mulcher, s/n PTJ04146: C/A, High Flow, 2-sp., Joystick Controls, Multi Terrain, Fecon 72" Mulching Head, 2658 hrs
 2008 Cat 297C Forestry Mulcher, s/n CGC01270: XPS High Flow, C/A, Joystick Controls, Hyd. Quick Connect, New Tracks, Fecon 72" Mulching Head

ASPHALT & COMPACTION EQUIPMENT
 2002 Cat CB434C Tandem Drum Roller, s/n 4DN00482
 Etnyre Chip Spreader, s/n K5307: (County-Owned)

FORKLIFTS
 Toyota 7BPU15 Order Picker, s/n 81030: 240" Lift, 24V Electric, No Charger, 3000 lb. Cap.

PERSONNEL LIFTS
 JLG 460SJ Boom-type Manlift, s/n 00135722

SERVICE / MECHANICS TRUCKS
 2012 International Transtar Service Truck, s/n 1HTJSSKH5CJ581557: S/A, Diesel Eng., Auto, Crew Cab, 4004EH Auto Crane, Air Compressor, Hose Reels, Outriggers, Odometer Shows 131K mi.
 2006 Hino Mechanics Truck, s/n 5PVDNDJXP62S10140: J08E-TA Hino Diesel, 6-sp.,

MISCELLANEOUS ITEMS
 2012 Kifco T30/1200 Irrigation Reel, s/n 460214/578
 Heil Aluminum 4620-gallon Baffled Tank, s/n 23412: w/ Roper Pump
 Heil Aluminum 4620-gallon Baffled Tank, s/n 23415: w/ Roper Pump
 Tank off Fuel Trailer: 2-compartment, Scully Intellicheck 2 Failsafe Sensing System
 Tank off Fuel Trailer: 2-compartment, Scully Intellicheck 2 Failsafe Sensing System
 PTO-driven Pump
 PTO-driven Pump
 Dually Bed for Ford Truck
 40' Shipping Container, s/n HLXU4427498
 40' Shipping Container, s/n HLXU4332807
 20' Shipping Container, s/n HLXU2287252
 20' Shipping Container, s/n DVRU1516308
 2) Goodyear 445/50R22.5 Tires w/ Wheels
 2) Goodyear 445/50R22.5 Tires w/ Alum. Wheels
 Diesel Engine, s/n R40899R of JD 4020 Tractor

WACKER BS700 Tamp, s/n 5450632: Gas Eng.
 Hotsy 555SS Steam Cleaner, s/n 172847: 1300 psi
 Easy Kleen Magnum 4000 Hot Water Pressure Washer, s/n 162881: 4000 psi
 Easy Kleen Magnum 4000 Hot Water Pressure Washer, s/n 162878: 4000 psi
 Easy Kleen Magnum 4000 Hot Water Pressure Washer, s/n 162880: 4000 psi
 Easy Kleen Magnum 4000 Hot Water Pressure Washer, s/n 162879: 4000 psi
 Lantech Q300 Stretch Wrapper, s/n QM030242: Turntable, Programmable Tension, Banding Capability
 (2) New 4x20' Shop Tables
 (2) Cattle Panels
 Pallet of Assorted Skid Steer Parts
 Mermaid Fountain
 (3) Sheets of 48x109A36 Road Steel Plate
 (3) Sheets of 48x96A36 Road Steel Plate
 Floor Jack
 84" 4ga Fork Extension for Skid Steer
 2) Lots of Misc. New Bobcat Parts
 (2) Lots of Misc. Bobcat Parts
 Lot Containing Bobcat Wheels and Bucket Teeth
 Misc. Lot containing Chain Hoist, Coma-along, Gauges, etc.

WACKER BS700 Tamp, s/n 5450632: Gas Eng.
 Hotsy 555SS Steam Cleaner, s/n 172847: 1300 psi
 Easy Kleen Magnum 4000 Hot Water Pressure Washer, s/n 162881: 4000 psi
 Easy Kleen Magnum 4000 Hot Water Pressure Washer, s/n 162878: 4000 psi
 Easy Kleen Magnum 4000 Hot Water Pressure Washer, s/n 162880: 4000 psi
 Easy Kleen Magnum 4000 Hot Water Pressure Washer, s/n 162879: 4000 psi
 Lantech Q300 Stretch Wrapper, s/n QM030242: Turntable, Programmable Tension, Banding Capability
 (2) New 4x20' Shop Tables
 (2) Cattle Panels
 Pallet of Assorted Skid Steer Parts
 Mermaid Fountain
 (3) Sheets of 48x109A36 Road Steel Plate
 (3) Sheets of 48x96A36 Road Steel Plate
 Floor Jack
 84" 4ga Fork Extension for Skid Steer
 2) Lots of Misc. New Bobcat Parts
 (2) Lots of Misc. Bobcat Parts
 Lot Containing Bobcat Wheels and Bucket Teeth
 Misc. Lot containing Chain Hoist, Coma-along, Gauges, etc.

WACKER BS700 Tamp, s/n 5450632: Gas Eng.
 Hotsy 555SS Steam Cleaner, s/n 172847: 1300 psi
 Easy Kleen Magnum 4000 Hot Water Pressure Washer, s/n 162881: 4000 psi
 Easy Kleen Magnum 4000 Hot Water Pressure Washer, s/n 162878: 4000 psi
 Easy Kleen Magnum 4000 Hot Water Pressure Washer, s/n 162880: 4000 psi
 Easy Kleen Magnum 4000 Hot Water Pressure Washer, s/n 162879: 4000 psi
 Lantech Q300 Stretch Wrapper, s/n QM030242: Turntable, Programmable Tension, Banding Capability
 (2) New 4x20' Shop Tables
 (2) Cattle Panels
 Pallet of Assorted Skid Steer Parts
 Mermaid Fountain
 (3) Sheets of 48x109A36 Road Steel Plate
 (3) Sheets of 48x96A36 Road Steel Plate
 Floor Jack
 84" 4ga Fork Extension for Skid Steer
 2) Lots of Misc. New Bobcat Parts
 (2) Lots of Misc. Bobcat Parts
 Lot Containing Bobcat Wheels and Bucket Teeth
 Misc. Lot containing Chain Hoist, Coma-along, Gauges, etc.

WACKER BS700 Tamp, s/n 5450632: Gas Eng.
 Hotsy 555SS Steam Cleaner, s/n 172847: 1300 psi
 Easy Kleen Magnum 4000 Hot Water Pressure Washer, s/n 162881: 4000 psi
 Easy Kleen Magnum 4000 Hot Water Pressure Washer, s/n 162878: 4000 psi
 Easy Kleen Magnum 4000 Hot Water Pressure Washer, s/n 162880: 4000 psi
 Easy Kleen Magnum 4000 Hot Water Pressure Washer, s/n 162879: 4000 psi
 Lantech Q300 Stretch Wrapper, s/n QM030242: Turntable, Programmable Tension, Banding Capability
 (2) New 4x20' Shop Tables
 (2) Cattle Panels
 Pallet of Assorted Skid Steer Parts
 Mermaid Fountain
 (3) Sheets of 48x109A36 Road Steel Plate
 (3) Sheets of 48x96A36 Road Steel Plate
 Floor Jack
 84" 4ga Fork Extension for Skid Steer
 2) Lots of Misc. New Bobcat Parts
 (2) Lots of Misc. Bobcat Parts
 Lot Containing Bobcat Wheels and Bucket Teeth
 Misc. Lot containing Chain Hoist, Coma-along, Gauges, etc.

WACKER BS700 Tamp, s/n 5450632: Gas Eng.
 Hotsy 555SS Steam Cleaner, s/n 172847: 1300 psi
 Easy Kleen Magnum 4000 Hot Water Pressure Washer, s/n 162881: 4000 psi
 Easy Kleen Magnum 4000 Hot Water Pressure Washer, s/n 162878: 4000 psi
 Easy Kleen Magnum 4000 Hot Water Pressure Washer, s/n 162880: 4000 psi
 Easy Kleen Magnum 4000 Hot Water Pressure Washer, s/n 162879: 4000 psi
 Lantech Q300 Stretch Wrapper, s/n QM030242: Turntable, Programmable Tension, Banding Capability
 (2) New 4x20' Shop Tables
 (2) Cattle Panels
 Pallet of Assorted Skid Steer Parts
 Mermaid Fountain
 (3) Sheets of 48x109A36 Road Steel Plate
 (3) Sheets of 48x96A36 Road Steel Plate
 Floor Jack
 84" 4ga Fork Extension for Skid Steer
 2) Lots of Misc. New Bobcat Parts
 (2) Lots of Misc. Bobcat Parts
 Lot Containing Bobcat Wheels and Bucket Teeth
 Misc. Lot containing Chain Hoist, Coma-along, Gauges, etc.

WACKER BS700 Tamp, s/n 5450632: Gas Eng.
 Hotsy 555SS Steam Cleaner, s/n 172847: 1300 psi
 Easy Kleen Magnum 4000 Hot Water Pressure Washer, s/n 162881: 4000 psi
 Easy Kleen Magnum 4000 Hot Water Pressure Washer, s/n 162878: 4000 psi
 Easy Kleen Magnum 4000 Hot Water Pressure Washer, s/n 162880: 4000 psi
 Easy Kleen Magnum 4000 Hot Water Pressure Washer, s/n 162879: 4000 psi
 Lantech Q300 Stretch Wrapper, s/n QM030242: Turntable, Programmable Tension, Banding Capability
 (2) New 4x20' Shop Tables
 (2) Cattle Panels
 Pallet of Assorted Skid Steer Parts
 Mermaid Fountain
 (3) Sheets of 48x109A36 Road Steel Plate
 (3) Sheets of 48x96A36 Road Steel Plate
 Floor Jack
 84" 4ga Fork Extension for Skid Steer
 2) Lots of Misc. New Bobcat Parts
 (2) Lots of Misc. Bobcat Parts
 Lot Containing Bobcat Wheels and Bucket Teeth
 Misc. Lot containing Chain Hoist, Coma-along, Gauges, etc.

WACKER BS700 Tamp, s/n 5450632: Gas Eng.
 Hotsy 555SS Steam Cleaner, s/n 172847: 1300 psi
 Easy Kleen Magnum 4000 Hot Water Pressure Washer, s/n 162881: 4000 psi
 Easy Kleen Magnum 4000 Hot Water Pressure Washer, s/n 162878: 4000 psi
 Easy Kleen Magnum 4000 Hot Water Pressure Washer, s/n 162880: 4000 psi
 Easy Kleen Magnum 4000 Hot Water Pressure Washer, s/n 162879: 4000 psi
 Lantech Q300 Stretch Wrapper, s/n QM030242: Turntable, Programmable Tension, Banding Capability
 (2) New 4x20' Shop Tables
 (2) Cattle Panels
 Pallet of Assorted Skid Steer Parts
 Mermaid Fountain
 (3) Sheets of 48x109A36 Road Steel Plate
 (3) Sheets of 48x96A36 Road Steel Plate
 Floor Jack
 84" 4ga Fork Extension for Skid Steer
 2) Lots of Misc. New Bobcat Parts
 (2) Lots of Misc. Bobcat Parts
 Lot Containing Bobcat Wheels and Bucket Teeth
 Misc. Lot containing Chain Hoist, Coma-along, Gauges, etc.

WACKER BS700 Tamp, s/n 5450632: Gas Eng.
 Hotsy 555SS Steam Cleaner, s/n 172847: 1300 psi
 Easy Kleen Magnum 4000 Hot Water Pressure Washer, s/n 162881: 4000 psi
 Easy Kleen Magnum 4000 Hot Water Pressure Washer, s/n 162878: 4000 psi
 Easy Kleen Magnum 4000 Hot Water Pressure Washer, s/n 162880: 4000 psi
 Easy Kleen Magnum 4000 Hot Water Pressure Washer, s/n 162879: 4000 psi
 Lantech Q300 Stretch Wrapper, s/n QM030242: Turntable, Programmable Tension, Banding Capability
 (2) New 4x20' Shop Tables
 (2) Cattle Panels
 Pallet of Assorted Skid Steer Parts
 Mermaid Fountain
 (3) Sheets of 48x109A36 Road Steel Plate
 (3) Sheets of 48x96A36 Road Steel Plate
 Floor Jack
 84" 4ga Fork Extension for Skid Steer
 2) Lots of Misc. New Bobcat Parts
 (2) Lots of Misc. Bobcat Parts
 Lot Containing Bobcat Wheels and Bucket Teeth
 Misc. Lot containing Chain Hoist, Coma-along, Gauges, etc.

WACKER BS700 Tamp, s/n 5450632: Gas Eng.
 Hotsy 555SS Steam Cleaner, s/n 172847: 1300 psi
 Easy Kleen Magnum 4000 Hot Water Pressure Washer, s/n 162881: 4000 psi
 Easy Kleen Magnum 4000 Hot Water Pressure Washer, s/n 162878: 4000 psi
 Easy Kleen Magnum 4000 Hot Water Pressure Washer, s/n 162880: 4000 psi
 Easy Kleen Magnum 4000 Hot Water Pressure Washer, s/n 162879: 4000 psi
 Lantech Q300 Stretch Wrapper, s/n QM030242: Turntable, Programmable Tension, Banding Capability
 (2) New 4x20' Shop Tables
 (2) Cattle Panels
 Pallet of Assorted Skid Steer Parts
 Mermaid Fountain
 (3) Sheets of 48x109A36 Road Steel Plate
 (3) Sheets of 48x96A36 Road Steel Plate
 Floor Jack
 84" 4ga Fork Extension for Skid Steer
 2) Lots of Misc. New Bobcat Parts
 (2) Lots of Misc. Bobcat Parts
 Lot Containing Bobcat Wheels and Bucket Teeth
 Misc. Lot containing Chain Hoist, Coma-along, Gauges, etc.

WACKER BS700 Tamp, s/n 5450632: Gas Eng.
 Hotsy 555SS Steam Cleaner, s/n 172847: 1300 psi
 Easy Kleen Magnum 4000 Hot Water Pressure Washer, s/n 162881: 4000 psi
 Easy Kleen Magnum 4000 Hot Water Pressure Washer, s/n 162878: 4000 psi
 Easy Kleen Magnum 4000 Hot Water Pressure Washer, s/n 162880: 4000 psi
 Easy Kleen Magnum 4000 Hot Water Pressure Washer, s/n 162879: 4000 psi
 Lantech Q300 Stretch Wrapper, s/n QM030242: Turntable, Programmable Tension, Banding Capability
 (2) New 4x20' Shop Tables
 (2) Cattle Panels
 Pallet of Assorted Skid Steer Parts
 Mermaid Fountain
 (3) Sheets of 48x109A36 Road Steel Plate
 (3) Sheets of 48x96A36 Road Steel Plate
 Floor Jack
 84" 4ga Fork Extension for Skid Steer
 2) Lots of Misc. New Bobcat Parts
 (2) Lots of Misc. Bobcat Parts
 Lot Containing Bobcat Wheels and Bucket Teeth
 Misc. Lot containing Chain Hoist, Coma-along, Gauges, etc.

UTILITY VEHICLES, CARTS & ATVS
 2013 Polaris Brutus 4WD Utility Vehicle, s/n 4XA2D9J9D7332591: Diesel, Encl. Cab, A/C, 211 hrs
 Kawasaki 3010 Mule Utility Vehicle, s/n B501272: Diesel, 4 Seater
 John Deere TX Gator Utility Vehicle, s/n D050372

MOWERS
 Kubota F2880 Front Deck Rotary Mower, s/n 10699: 72" Deck
 Dixie Chopper Zero-turn Mower, s/n 4049757
 Kubota ZD331 Zero-turn Mower, s/n 14107
 Kubota ZD18 Zero-turn Mower, s/n 42767: Diesel
 Scag Turf Tiger Zero-turn Mower, s/n 8540114
 ExMark LZ25KX523 Zero-turn Mower, s/n 174756: 52" Cut, 1094 hrs

SALVAGE ITEMS
 2002 Peterbilt Truck Tractor, s/n 1XPCD69X62D571914: Day Cab
 2000 Peterbilt 385 Truck Tractor, s/n 1XPGD09X9D515570: T/A, Cummins Diesel, 9-sp, 5th Wheel, Bad Turbo
 Mack Truck Tractor: No Engine, Double Shift Trans.
 2006 Peterbilt 357 Tandem-axle Dump Truck, s/n 1NPAK00X36M46632: Cat Eng., Wrecked
 John Deere 4640 Tractor, s/n 009302
 2009 Ford F150 Pickup, s/n 1FTRF12W09K857445: 2wd, Auto, LWB, Bad Engine, 146K mi.
 2009 Ford F150 Pickup, s/n 1FTRF12W89KA07294: 2wd, Auto, LWB, Bad Engine, 127K mi.
 2004 Ford F350 Flatbed Truck, s/n 1FDWW36P14ED86785: 4-door, 6.0 Diesel, Auto, 213K mi.
 1999 Ford F250 Pickup, s/n 1FTNX20S9XEC95997
 Yamaha Gas Golf Cart

UTILITY VEHICLES, CARTS & ATVS
 Kawasaki 4010 Mule Utility Vehicle, s/n B510671: Gas, 4 Seater
 John Deere TX Gator Utility Vehicle, s/n D050367

SALVAGE EQUIPMENT
 Case 621 Rubber-tired Loader, s/n JAB0086177: Fire Damaged
 Komatsu WB140 Loader Backhoe, s/n A20561
 Komatsu WB140 Loader Backhoe, s/n 10445
 John Deere 310C 4WD Loader Backhoe, s/n 769302: Transmission Problems

UTILITY VEHICLES, CARTS & ATVS
 Kawasaki 4010 Mule Utility Vehicle, s/n B510671: Gas, 4 Seater
 John Deere TX Gator Utility Vehicle, s/n D050367

SALVAGE EQUIPMENT
 Case 621 Rubber-tired Loader, s/n JAB0086177: Fire Damaged
 Komatsu WB140 Loader Backhoe, s/n A20561
 Komatsu WB140 Loader Backhoe, s/n 10445
 John Deere 310C 4WD Loader Backhoe, s/n 769302: Transmission Problems

UTILITY VEHICLES, CARTS & ATVS
 Kawasaki 4010 Mule Utility Vehicle, s/n B510671: Gas, 4 Seater
 John Deere TX Gator Utility Vehicle, s/n D050367

SALVAGE EQUIPMENT
 Case 621 Rubber-tired Loader, s/n JAB0086177: Fire Damaged
 Komatsu WB140 Loader Backhoe, s/n A20561
 Komatsu WB140 Loader Backhoe, s/n 10445
 John Deere 310C 4WD Loader Backhoe, s/n 769302: Transmission Problems

UTILITY VEHICLES, CARTS & ATVS
 Kawasaki 4010 Mule Utility Vehicle, s/n B510671: Gas, 4 Seater
 John Deere TX Gator Utility Vehicle, s/n D050367

SALVAGE EQUIPMENT
 Case 621 Rubber-tired Loader, s/n JAB0086177: Fire Damaged
 Komatsu WB140 Loader Backhoe, s/n A20561
 Komatsu WB140 Loader Backhoe, s/n 10445
 John Deere